

1" ELECTRIC DIAPHRAGM PUMP TECHNICAL DATA SHEET

SERIES: HEAVY DUTY ELECTRIC DIAPHRAGM PUMP

Engineered for the World's Most Challenging Fluid Transfer Applications

SPECIFICATIONS

SUCTION / DISCHARGE PORT SIZE

- 25 MM (1") - ANSI 150# Flanges

MAXIMUM FLOW RATE GPM

- 87 lpm (22 gpm)

SOLIDS HANDLING

- Up to 5 mm (.27")

MAX OPERATING PRESSURE

- 5.5 bar (79 psi)

MAXIMUM SUCTION LIFT - M (FT)

- 8+ (26') Wet / 4+ (14') Dry*

HEADS UP TO - M (FT)

- 55m (180 ft)

DISPLACEMENT PER STROKE - L (GAL)

- 0.68L (0.18 gal)

MOTOR & GEAR BOX - HP

- 1.1 kW (1.5 hp)

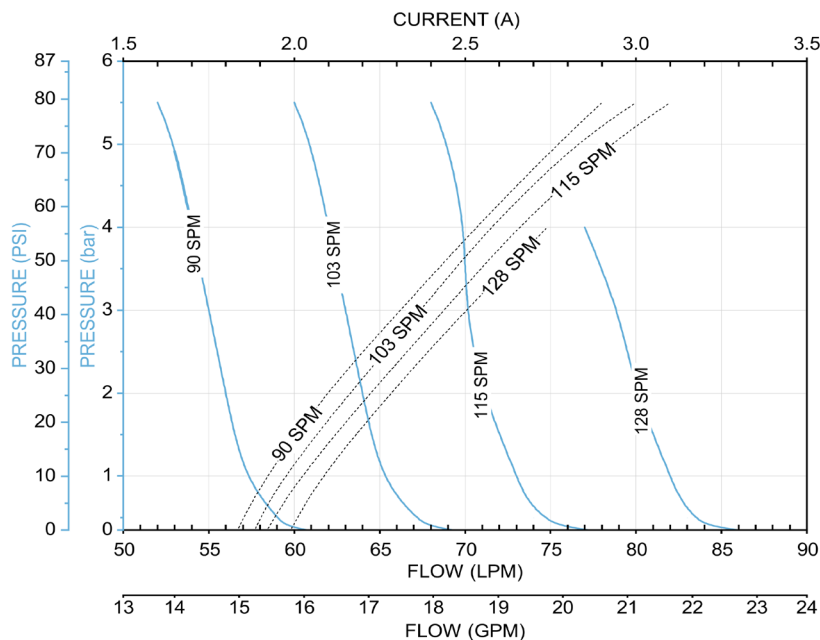
SOUND LEVEL

- <80 db

MATERIAL OF CONSTRUCTION

- Pump Wetted Parts - Polypropylene
- Diaphragm and Check Ball Valve: Santoprene, PTFE

*Applicable to Santoprene and PTFE Diaphragms only

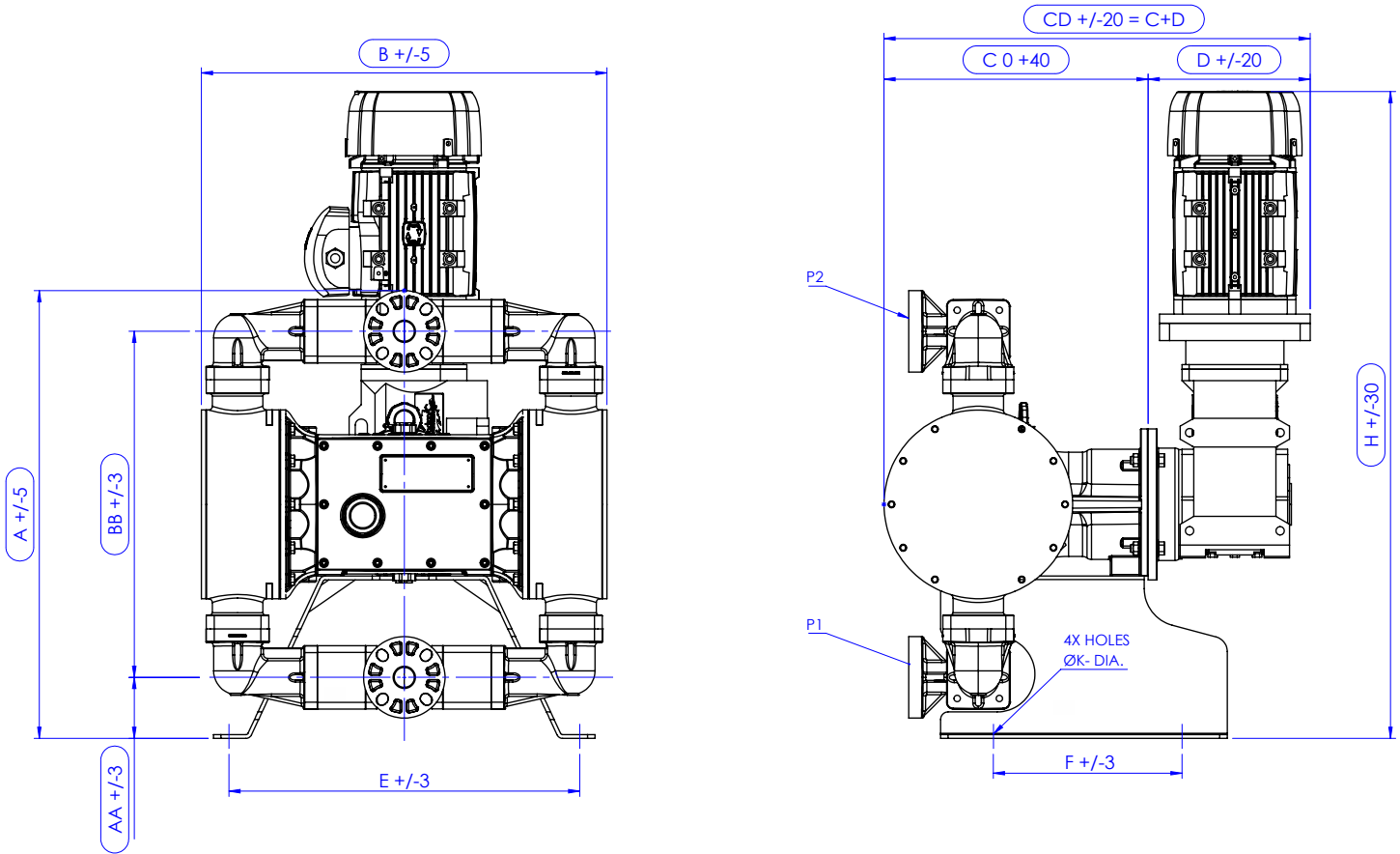


Notes:

1. Use 2 HP / 1.5 KW motor for above 2.5 AMPS
2. The performance curve is based on following: Santoprene elastomer fitted pump, flooded suction, water at ambient conditions 25°C (77°F), with Cognito Dampener
3. The performance result may deviate in excess of 5% based on elastomer
4. Performance vary based on viscosity

DIMENSIONS

INLINE ARRANGEMENT



DIMENSION & WEIGHT - INLINE*		25 MM (1")
POLYPROPYLENE		
Height w/o Dampener: MM (IN)	A	460mm (18.11")
Width: MM (IN)	B	540mm (21.26")
Length: MM (IN)	C	565mm (22.24")
Approx Shipping Weight: KG (LBS) Bare Pump	W	143kg (315 lbs)
Approx Shipping Weight: KG (LBS) Pump, Motor, Gear Box	W	239kg (526 lbs)

*FINAL PUMP ASSEMBLY WEIGHTS AND DIMENSIONS DEPENDENT ON GEAR BOX AND MOTOR MANUFACTURER



IDEX INDIA PVT LTD
 Survey No. 256, Near Bombardier Circle,
 GIDC Manjusar, Savli, Dist. Vadodara
 391770, State Gujarat, India



Warren Rupp, Inc.
 800 North Main Street
 Mansfield, Ohio 44902 USA



www.cognitopump.com/contact